

4.11.23

# Nevada Cares Campus





# Nevada Cares Campus Development



# Nevada Cares Campus Development

- **Cares Campus approved at November 18, 2020 Joint Meeting (Reno/Sparks/Washoe)**
  - Immediate need: Increased shelter capacity needs during pandemic (Opened May 17, 2021)
  - Long term Vision: A centralized campus with a low barrier shelter, services and housing programs.
    - 15 Acre Site Acquisition: 10 acres for homeless services and 5 acres for future housing programs.
  
- **Interlocal agreement approved at August 30, 2021 Joint Meeting (Reno/Sparks/Washoe)**
  - Washoe County will be the lead entity for the homeless shelters and services and shall be responsible for: (relevant items included)
    - Develop, construct, and implement all aspects of the Nevada Cares Campus.
    - Establish and operate the safe camping facility pilot program and develop a longer-term location for the safe camp, as agreed to by the Parties and as was recommended by the Community Homelessness Advisory Board (CHAB).
    - Work with the Reno Housing Authority (RHA) and the City of Reno to develop transitional, supportive, and/or affordable housing programs.
    - Continue a good faith effort to provide low barrier bed capacity based on the needs of the region.



# Nevada Cares Campus Development

- Responsibility for the Cares Campus was transferred to Washoe County on September 1, 2021.
- Since that time:
  - 1.5 years of design and budget/grant development
  - Progress updates presented at numerous regional boards and committees in addition to meetings at:
    - BCC – 3 Update Presentations, 15 agenda items where action was taken (at a minimum)
    - CHAB – Updates at every meeting
    - Reno Planning Commission/NAB Ward 3 – For permits process

BEST PRACTICE	Org Code	Built For Zero	Jon DeCarmine	HUD
Appropriate Staffing Ratios	X	X	X	X
Housing First Methodology	X	X	X	X
Centralized Data and Reporting	X	X	X	X
Diversion Programs	X	X	X	X
Separating the Resource Center from the Shelter	X		X	
Coordinated Outreach & Law Enforcement Efforts	X	X	X	X
Supportive housing	X	X	X	X



# Nevada Cares Campus Development

## Chronic Homelessness



### Average Costs in Washoe County



**\$74 / day  
Shelter Bed**



**\$161 / day  
Detention**



**\$550 / trip  
REMSA Transport**



**\$2,397 / day  
Hospital**

<https://www.kff.org/health-costs/state-indicator/expenses-per-inpatient-day/>

## Chronic Homelessness



According to the National Alliance to End Homelessness, a person experiencing chronic homelessness costs the taxpayer an average of \$35,000 a year (2016)

**Adjusted for inflation =  
approx. \$44,000**

Costs (on average) are reduced by 49.5% when a chronically homeless person is placed into supportive housing.



<https://endhomelessness.org/resources-overview/>



# Nevada Cares Campus Development - Progress



## Operations

- Increased shelter capacity
- Appropriate staffing ratios
- Safety and security
- Behavioral Health Support
- Medical support
- Partnerships with regional service providers

\*Items in gold are complete



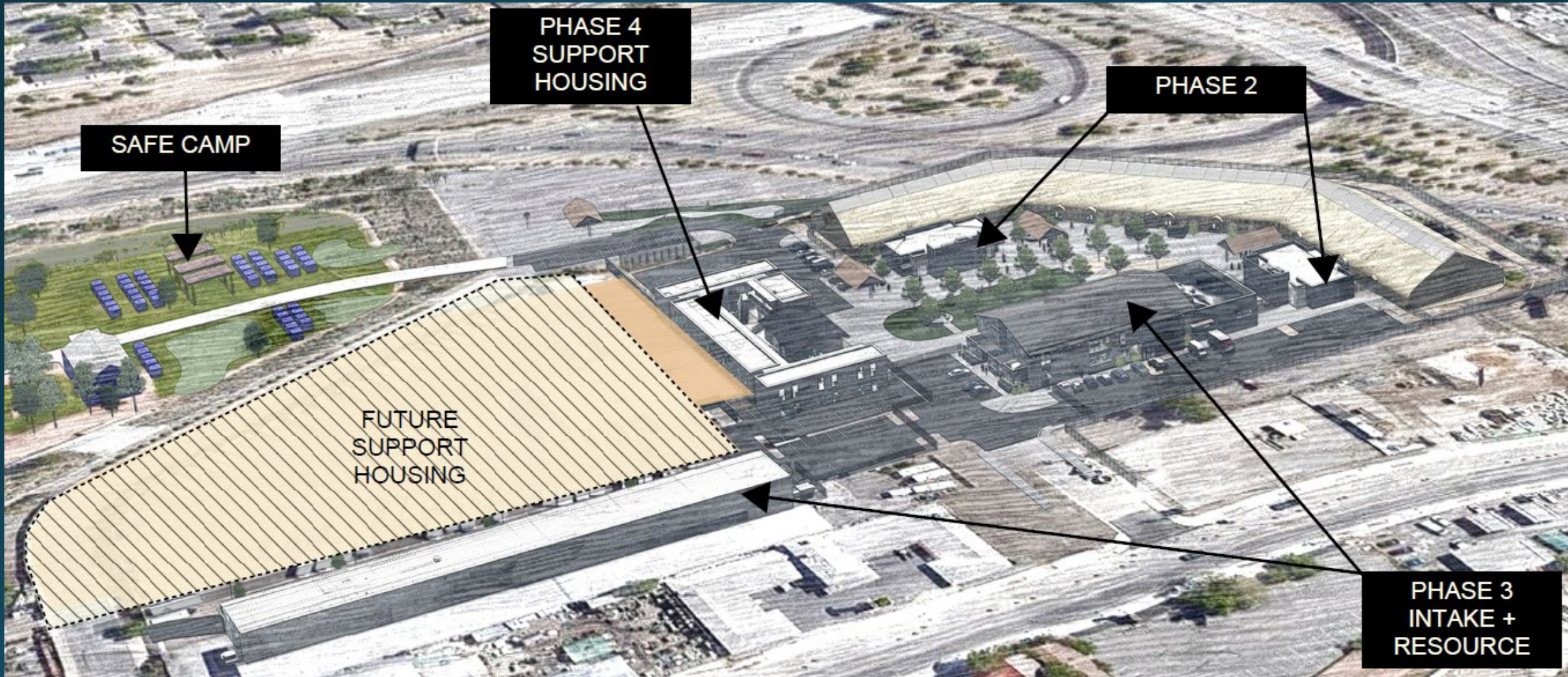
## Construction

- Phase 2: Sprung Improvements & Shower/Restroom/Laundry Buildings
- Phase 3: Resource Center and Welcome Center (Intake, Security, Case Management, Training, Behavioral Health, Dining Room, Admin Offices, winter emergency overflow)
- Phase 4: Supportive Housing
- Safe Camp
- Line Drive Housing Project





# Nevada Cares Campus Development

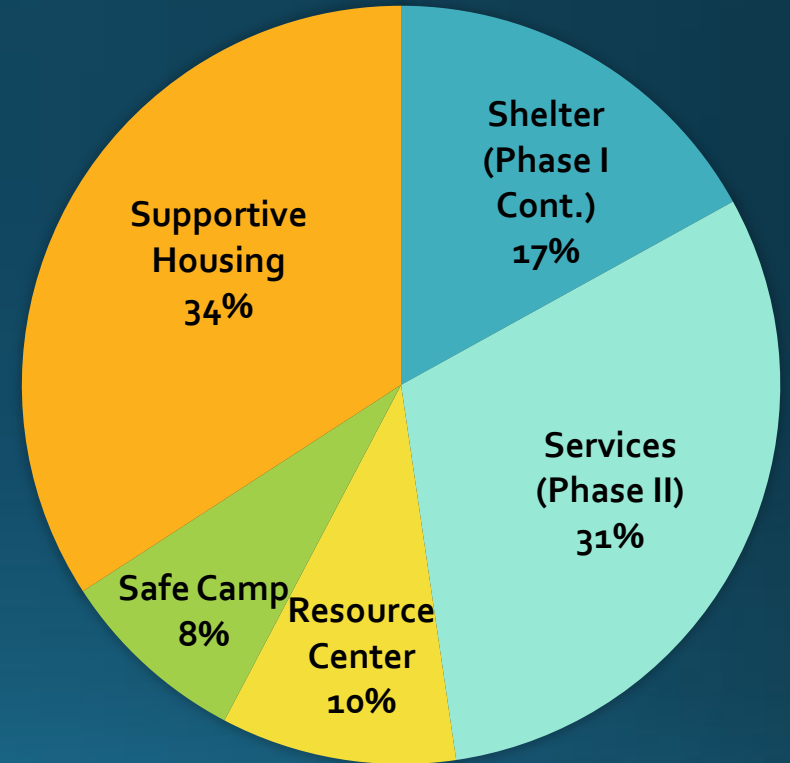




# Nevada Cares Campus Development - Capital Budget



Supportive Housing Program	\$17,035,809
Services Building: Training, Case Management & Office Space, Intake Area, Nurse Station, Cafeteria, Warming Kitchen	\$17,043,892
Restrooms/Showers/Laundry, Sprung Improvements	\$12,148,912
Site Improvements (utilities, paving, fencing, parking, green space, pet facilities, shade)	\$6,607,326
Gov Bowl Infrastructure & Safe Camp	\$5,245,000
RHA Property Purchase	\$5,500,000
Resource Center and Maintenance Area	\$4,761,355
Design	\$4,203,439
Site Utilities	\$1,829,155
FF&E	\$1,750,000
Demo of Existing Buildings / Fuel Tank Remediation	\$1,163,348
Permitting, Sewer Connection, Water Fees and Environmental Review	\$1,090,000
Professional services	\$350,000
<b>TOTAL Estimate</b>	<b>\$78,733,236</b>





# Nevada Cares Campus Development - Capital Budget



## Construction Budget

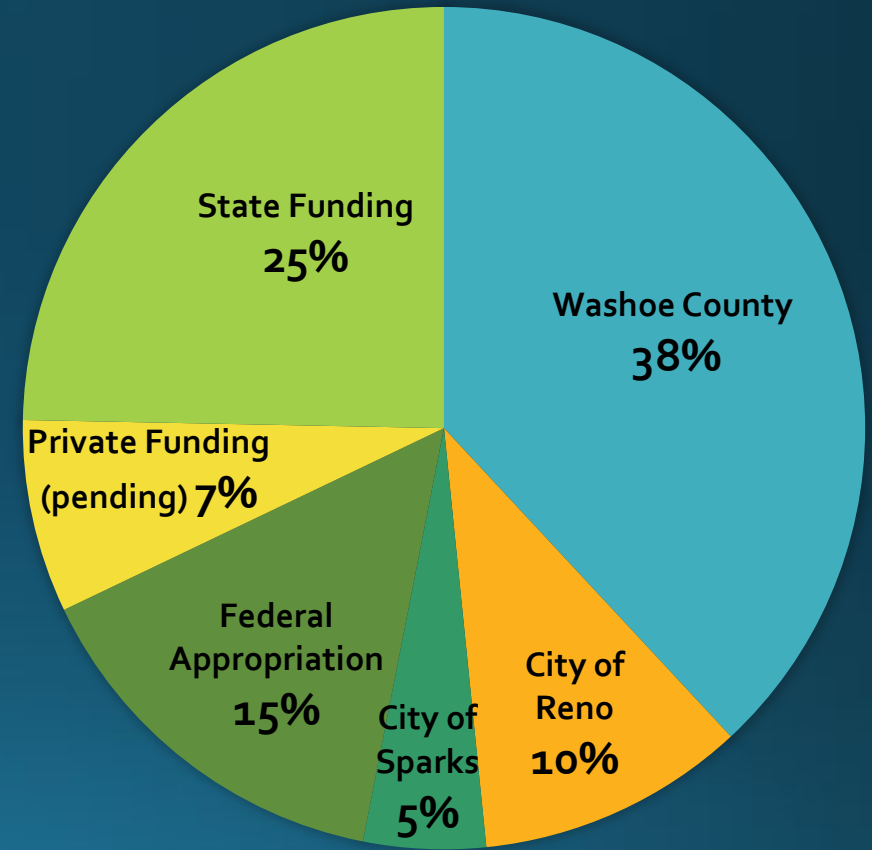
<b>Total Budget</b>	<b>\$78.7 million</b>
---------------------	-----------------------

## Identified Funding

Interlocal Agreement Cost Share (pie chart)	\$38 million
Home Means Nevada Funding	\$21.9 million
Federal Appropriation	\$12 million
RHA Property Purchase	\$5 million
Fundraising Capital Campaign	\$1.6 million

## Pending Funding

*Fundraising Capital Campaign
-------------------------------



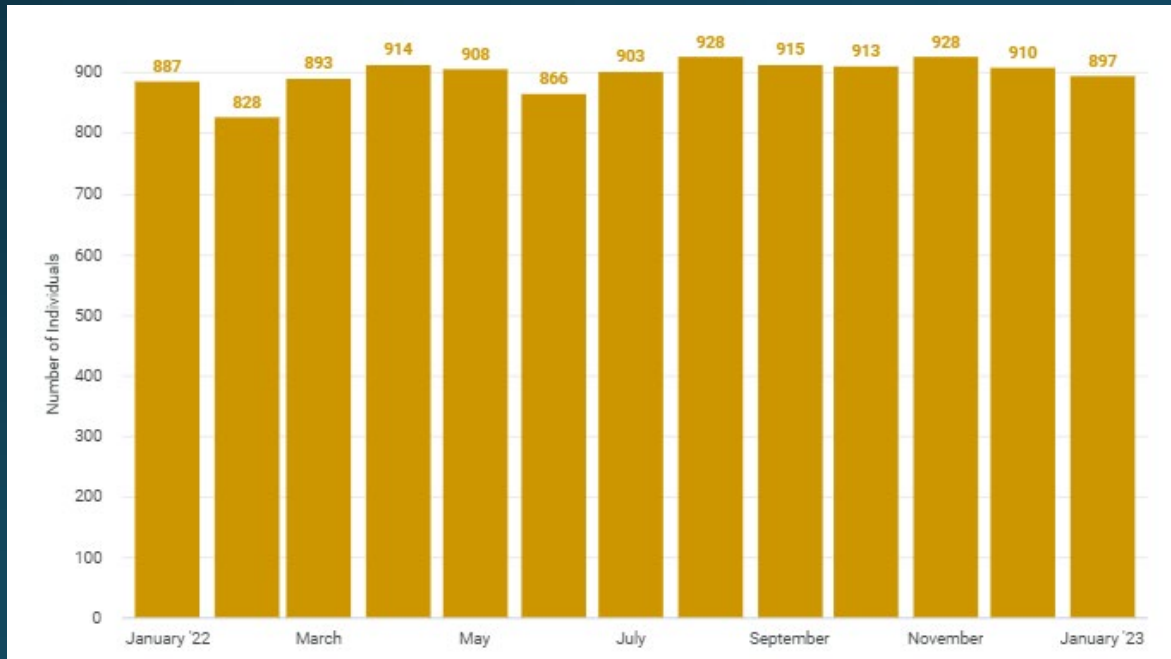


# Nevada Cares Campus Outcomes

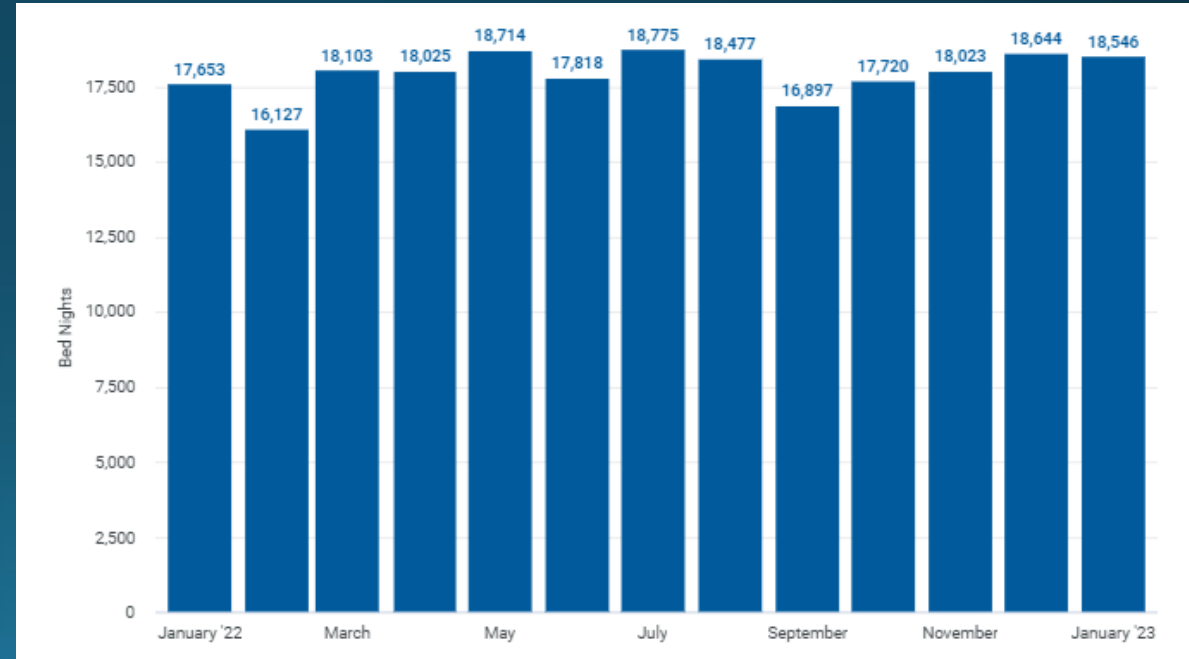


# Nevada Cares Campus

**Unique Clients Served**  
Feb 1, 2022 – Jan 31, 2023  
**2,849**

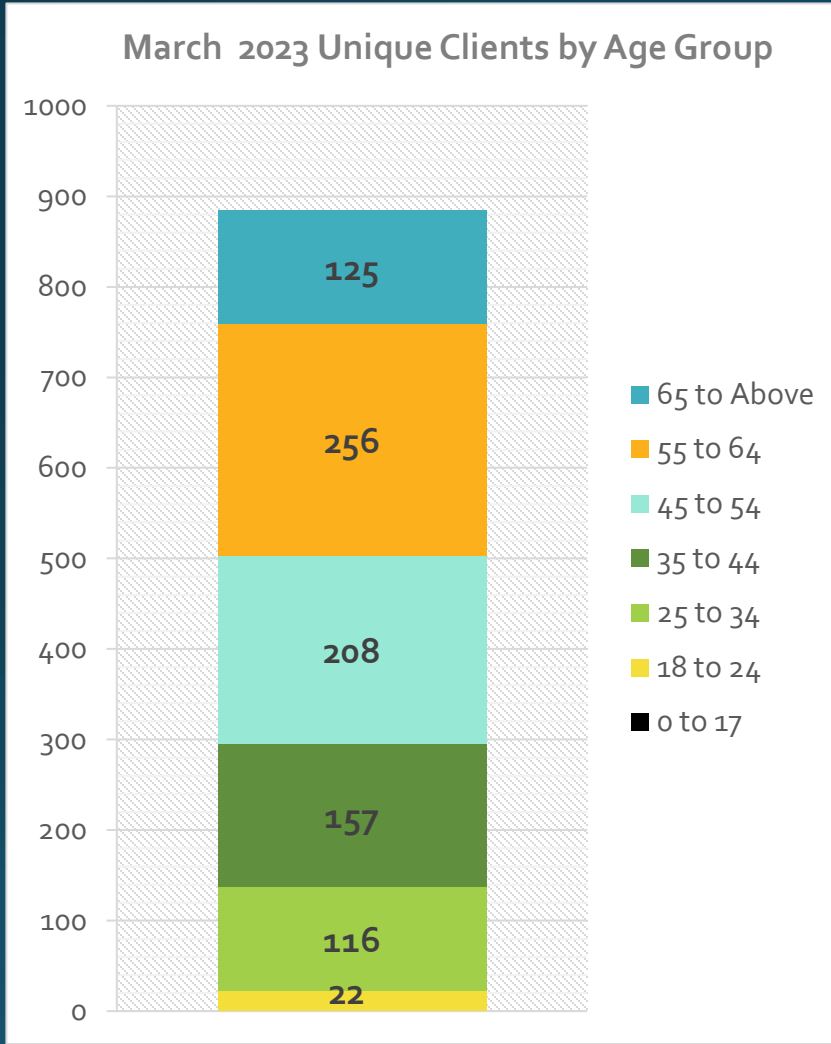


**Total Bed nights**  
Jan 31, 2022 – Jan 31, 2023  
**215,869**





# Nevada Cares Campus



- 50% Disability
- 43% Age 55+
- 29% Non-insured





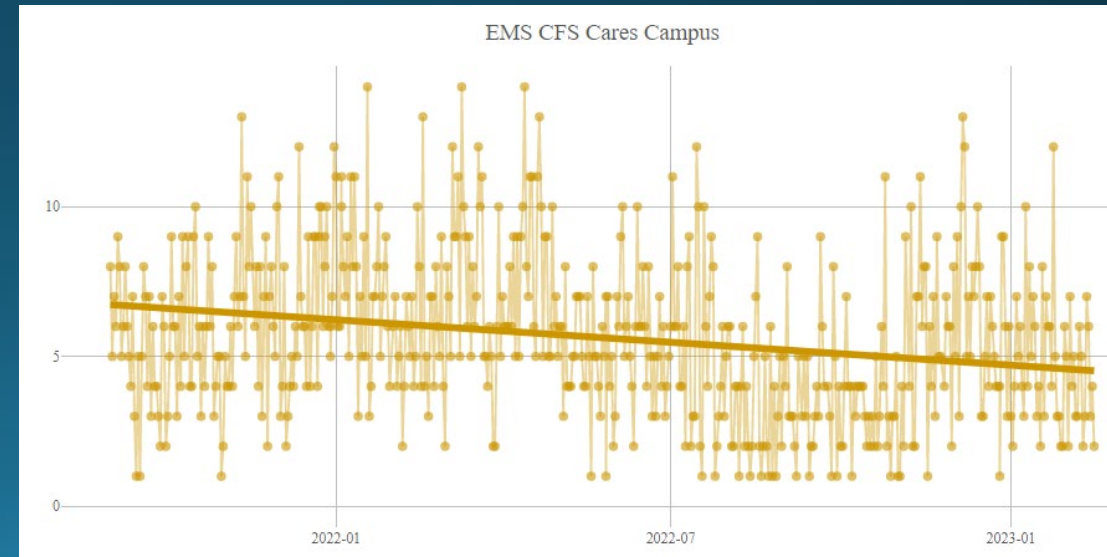
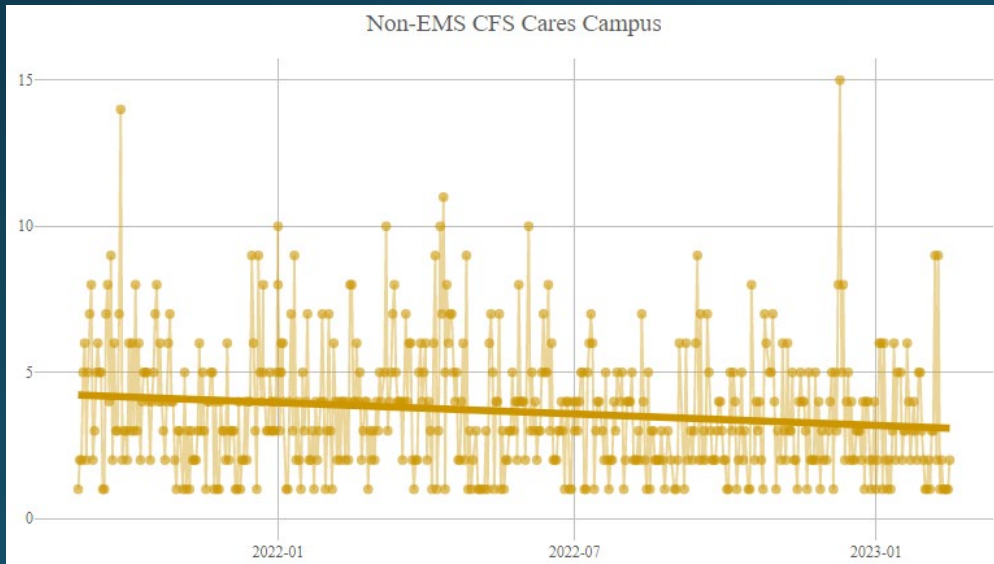
# Nevada Cares Campus Outcomes – Reliance on Regional Emergency Services



Decrease  
Law Enforcement  
Response



Decrease  
Emergency Medical  
Services Response





# Nevada Cares Campus Outcomes – Partnerships with Service Providers



Increased number of Partnerships with the Campus from 13 to 29 in the last year



Organized effort in our community leads to improved coordination and efficiency in providing services

Agreements in place or in progress

- Anthem
- Bristlecone
- Catholic Charities of Northern Nevada
- City of Reno - Clean and Safe Team
- DETR – Department of Employment, Training, and Rehabilitation
- Dispatch Health
- Eddy House
- Food Bank of Northern Nevada
- Health Plan of Nevada/United Healthcare
- JC Lighthouse
- Karma Box Project – Street Outreach
- Liberty Dental
- Mill Street Care Center
- Mobile One Docs
- Molina
- Northern Nevada Behavioral Health
- Northern Nevada HOPES
- Reno MOST
- Reno Sparks Gospel Mission
- Silver Summit
- Veterans Administration
- Vitality Unlimited
- Washoe County Health District
- WellCare
- Downtown Reno Partnership
- My Journey Home
- Reno Behavioral Health
- Washoe County MOST



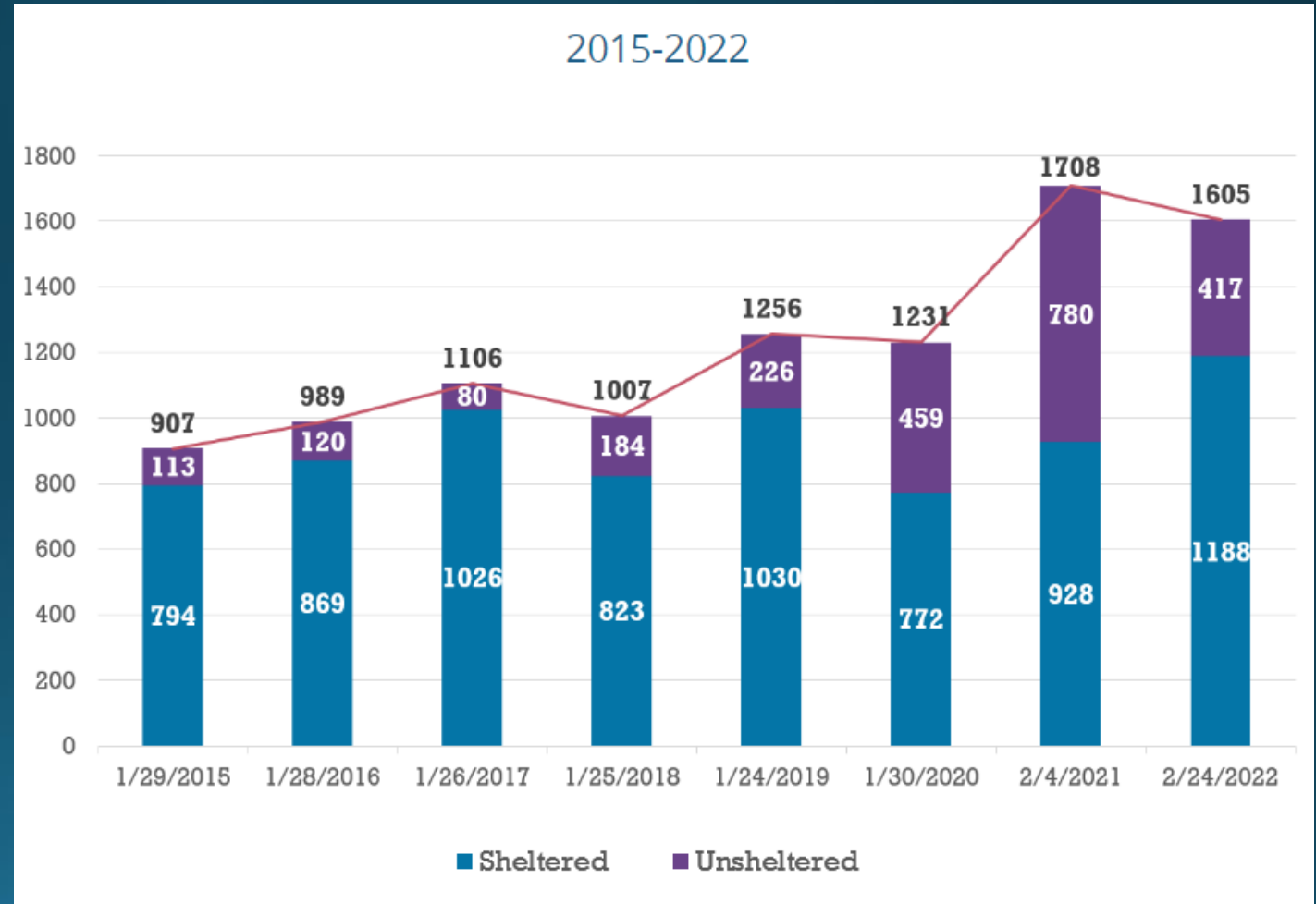
# Nevada Cares Campus Outcomes – Point in Time Count



Decrease of  
10.3% in the  
Point In Time  
Count from  
2021 to 2022



Decrease of  
46.5% in  
Unsheltered  
individuals

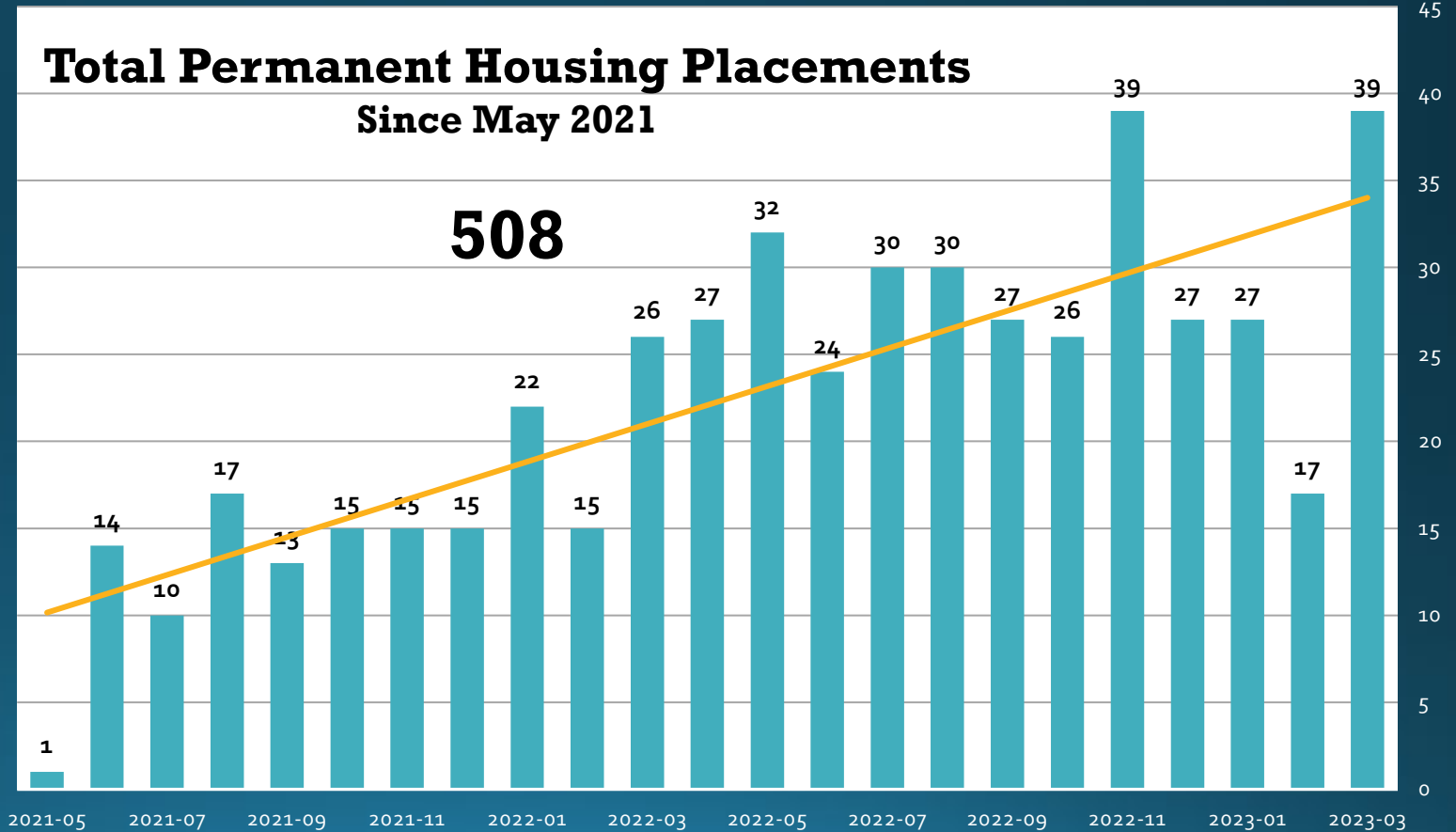




# Nevada Cares Campus Outcomes – Permanent Housing Placements



Tripled  
Permanent  
Housing  
Placements





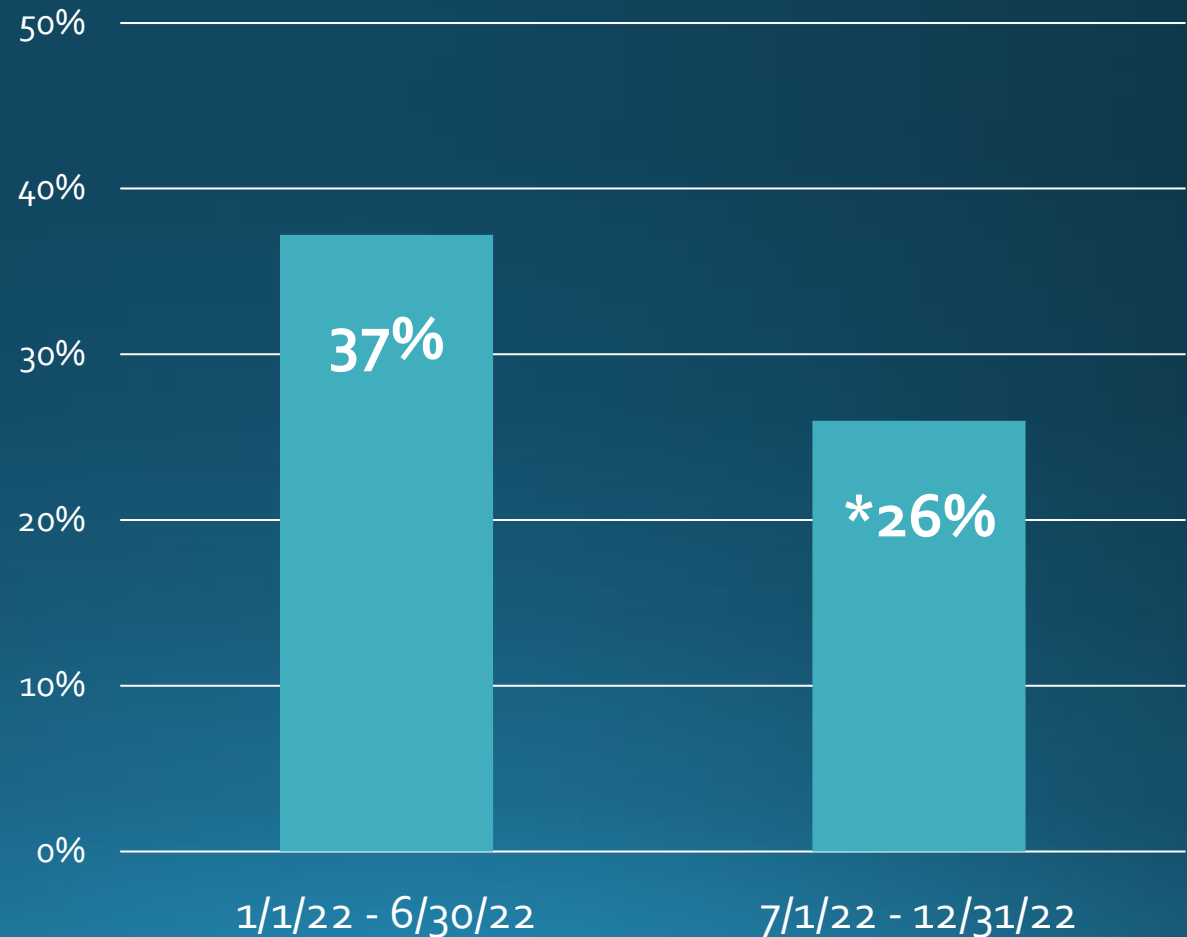


# Nevada Cares Campus Outcomes – Recidivism Rate



Decreased  
Recidivism  
Rate

% of Individuals that have  
returned to homelessness  
within 6 months of being housed

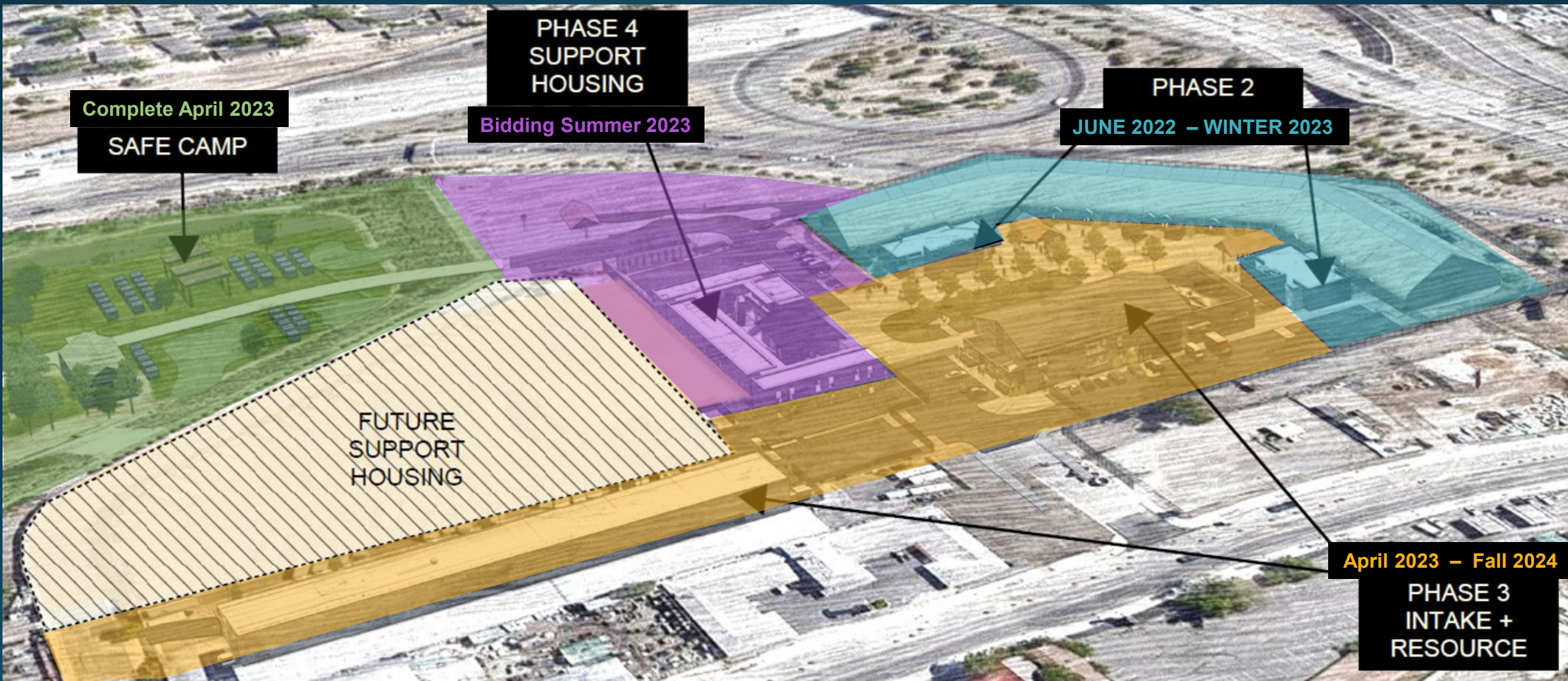




# Nevada Cares Campus Phase 3 GMP



# Nevada Cares Campus – Construction Timeline

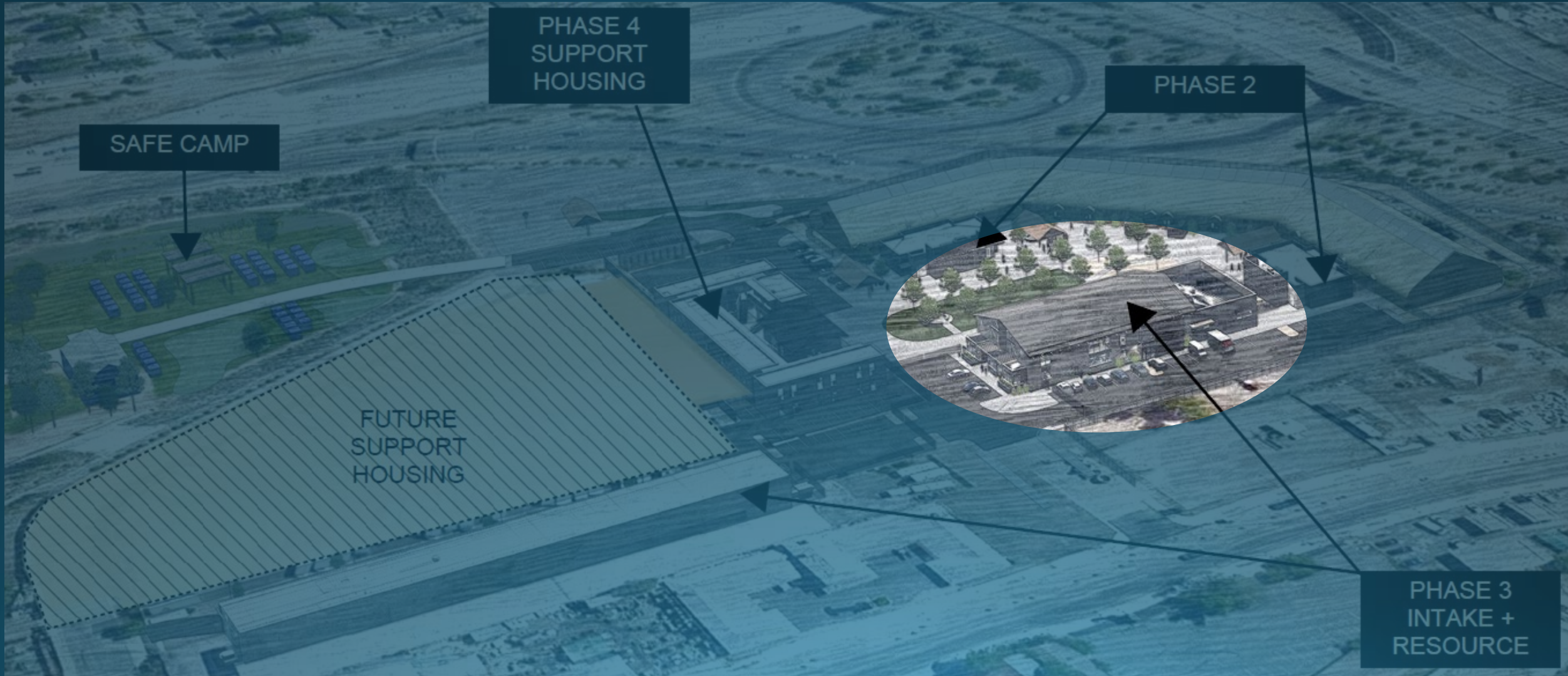






# Nevada Cares Campus – Phase III

Welcome Center / Case Management & Therapy / Staff Offices / Dining Hall



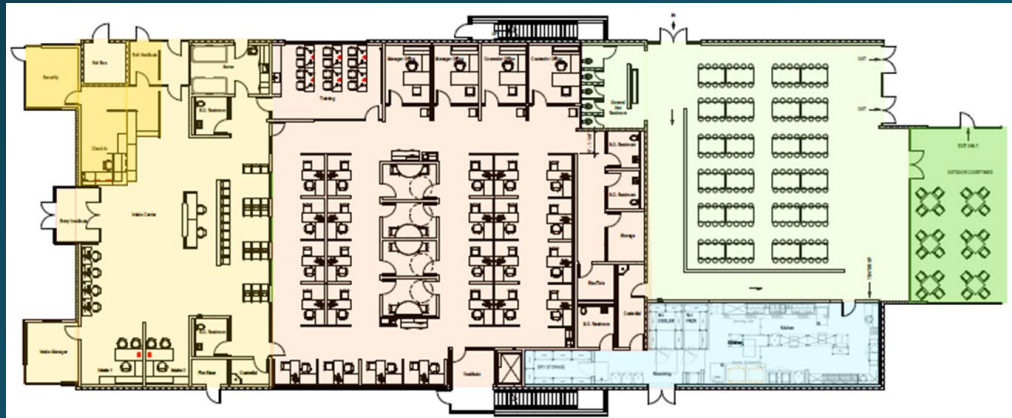




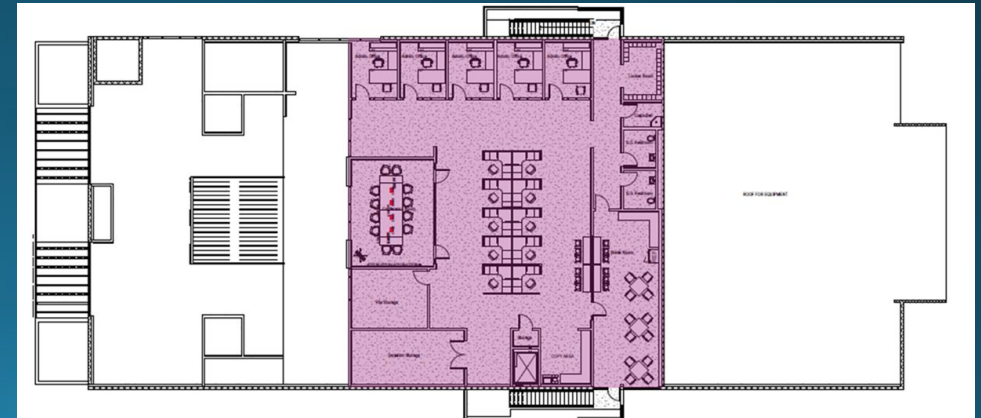
# Cares Campus – Welcome Center / Case Management & Therapy / Staff Offices / Dining Hall



First Floor



Second Floor

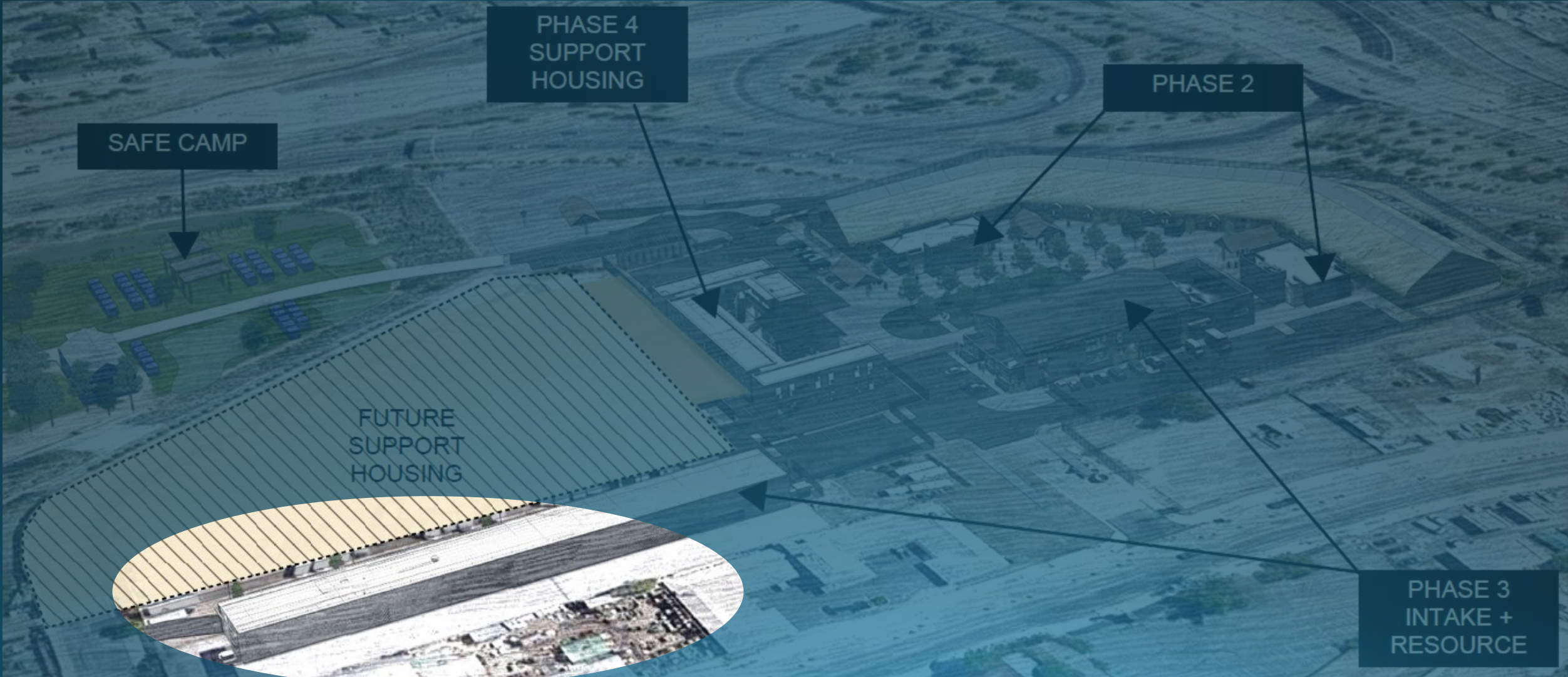






# Nevada Cares Campus – Phase III

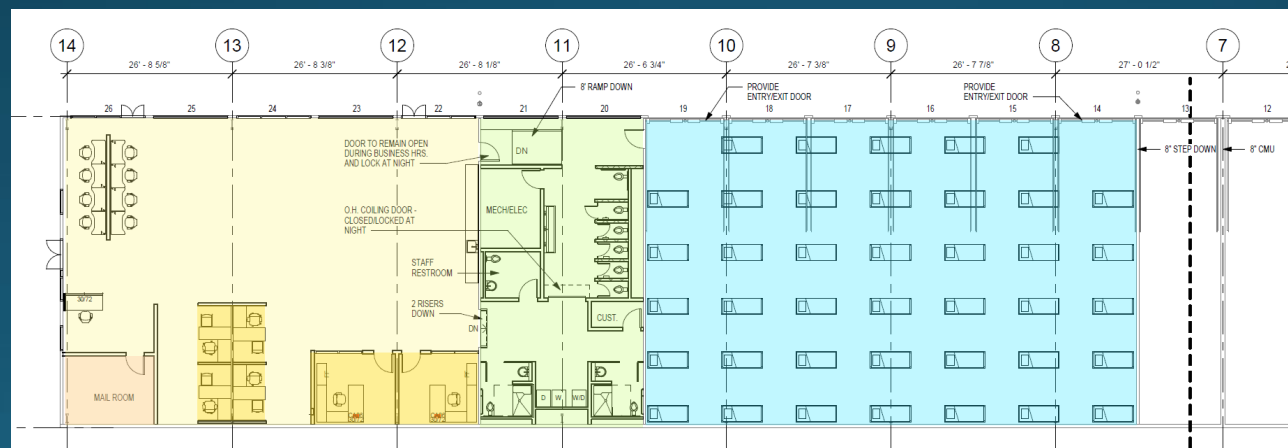
## Resource Center







# Nevada Cares Campus – Resource Center





# Nevada Cares Campus – GMP Funding

Funding for GMP for Phase 3 (approved by BCC December 20, 2022)

- ARPA: Washoe County Interlocal Agreement funding commitment (a portion also funded Safe Camp)
- Grant: Community Project Funding/Congressional Directed Spending in the Consolidated Appropriations Act, 2022 dedicated to the Nevada Cares Campus
- Capital Campaign Funds for the Nevada Cares Campus (and ARPA as the campaign is still underway)





# Nevada Cares Campus

Data for the Nevada Cares Campus located:

[https://www.washoecounty.gov/homeless/Cares-Campus/Emergency\\_Shelter/cares\\_campus\\_emergency\\_shelter\\_trends.php](https://www.washoecounty.gov/homeless/Cares-Campus/Emergency_Shelter/cares_campus_emergency_shelter_trends.php)