



WASHOE COUNTY

"Dedicated To Excellence in Public Service"

www.washoecounty.us

CM/ACM CS

Finance DN

DA ✓

Risk Mgt. N/A

Comptroller CA

County Clerk CS

STAFF REPORT

BOARD MEETING DATE: May 10, 2016

DATE: April 15, 2016
TO: Board of County Commissioners
FROM: Chris Benedict, Remediation District Manager,
Community Services Department, 954-4642, cbenedict@washoecounty.us
THROUGH: Dwayne Smith, P.E., Division Director, Engineering & Capital Projects,
Community Services Department, 328-2043, desmith@washoecounty.us
SUBJECT: (1) Public hearing to consider all comments concerning a proposed amendment to the boundaries of District No. 24 (Groundwater Remediation/Central Truckee Meadows Remediation District) in Washoe County, Nevada.

(2) If, after considering all comments, the Board approves the proposed amendment to the boundaries of District No. 24, direct that the amendment be made by ordinance. (All Commission Districts.)

SUMMARY

The Board of County Commissioners (Board) administers the Central Truckee Meadows Remediation District (CTMRD) program through the Community Services Department (CSD) in accordance with NRS 540A.250-285 and Washoe County Ordinance 1000.

The CTMRD was created in 1997 to address the widespread tetrachloroethene (PCE) contamination of groundwater used to meet municipal water demands in the greater Reno/Sparks area. This condition was certified to exist by the District Health Officer and the Nevada Division of Environmental Protection (NDEP) Administrator.

The CTMRD boundaries include the wholesale and retail service area of the water company or companies with water supply wells located within the contaminated area.

Changes to the CTMRD boundaries can be required as a result of changes in the extent of the contaminated area or as a result of changes in the service areas of water companies with water supply wells in the contaminated area.

NRS 540A.262 requires that the Board hold a hearing to discuss any proposed amendments to the CTMRD boundaries.

To satisfy NRS 540A.262's hearing requirement, the Board issued a resolution to hold a public hearing regarding proposed amendments to the CTMRD boundaries.

AGENDA ITEM # 12

Washoe County Strategic Objective supported by this item: Safe Secure and Healthy Communities.

PREVIOUS ACTION

Resolutions by the Board to hold public hearings to consider changes to the CTMRD boundaries have occurred annually since those boundaries were first created in 1997.

BACKGROUND

In 1997, in accordance with NRS 540A.250(1), the Board created, through the adoption of Ordinance 1000, District No. 24 (Groundwater Remediation); a.k.a. the CTMRD. The CTMRD was created to address the widespread PCE contamination of groundwater in the central Truckee Meadows that was certified to exist by the District Health Officer and the NDEP Administrator.

NRS 540A.250(3)(b) specifies that the CTMRD boundary shall include the wholesale and retail service area (i.e. within what is referred to as the CTMRD service area boundary) of the water company or companies with wells located within the area where the condition requiring remediation is present or expected to migrate unless remediation is carried out (i.e. within what is referred to as the CTMRD contaminant boundary).

The Truckee Meadows Water Authority (TMWA) has municipal water supply wells located within the CTMRD contaminant boundary. TMWA also provides wholesale water to Sun Valley General Improvement District and Parr-Reno Water Company. Accordingly, the CTMRD service area boundary for calendar year 2015 is defined to include the TMWA wholesale and retail service area.

Each year since 1997 the Board has, in accordance with NRS540A.262, amended the CTMRD boundary to reflect any parcels added to or removed from this service area. These changes could include:

- 1) Parcels added into or removed from the wholesale and retail service area of effected water purveyors and to exclude properties that are federally owned, properties that are undeveloped, and properties that receive water service wholly independent from those purveyors (i.e. the CTMRD Service Area Boundary); and,
- 2) Parcels added into or removed from the area where the condition requiring remediation has been determined by the Board to be present, including any area to which the condition is expected to migrate unless remediation is carried out (i.e. the CTMRD Contaminant Boundary).

NRS 540A.265 requires that the water service providers within the TMWA wholesale and retail service area provide Washoe County with the dollar amount billed for water service during the previous calendar year, by parcel, to each of the parcels within their respective water service areas, within 90 days of being requested to do so. The amount billed for water use provides the basis for determining the remediation fee. While NRS 540A.265 (1)(d) allows for assessing remediation fees against undeveloped parcels or parcels that receive water service wholly independent from water purveyors with wells within CTMRD contaminant boundary, staff has recommended since the initial creation

of the CTMRD boundaries that the Board exclude those properties from remediation fee assessment. Staff continues to make that recommendation at this time.

The "Boundary Amendment Ordinance" that will be introduced at a future public hearing will identify those parcels added into or removed from the service areas of affected water purveyors during calendar year 2015 and will identify those parcels that are to be excluded based upon continuation of the Board's previous direction.

FISCAL IMPACT

There is no cost to amend the CTMRD boundaries; however, the amendment of the Remediation District service area boundary will ensure that the County maintains an accurate list of the water using parcels within the CTMRD service area boundary. Remediation fees levied against those parcels based on annual water use will provide for the operation and maintenance of wellhead treatment on five municipal wells, and ongoing implementation of the Remediation Management Plan.

RECOMMENDATION

It is recommended that the Board of County Commissioners hold a public hearing to consider all comments concerning a proposed amendment to the boundaries of District No. 24 (Groundwater Remediation/Central Truckee Meadows Remediation District) in Washoe County, Nevada. And, if, after considering all comments, the Board approves the proposed amendment to the boundaries of District No. 24, it is recommended that the Board direct that the amendment be made by ordinance.

POSSIBLE MOTION

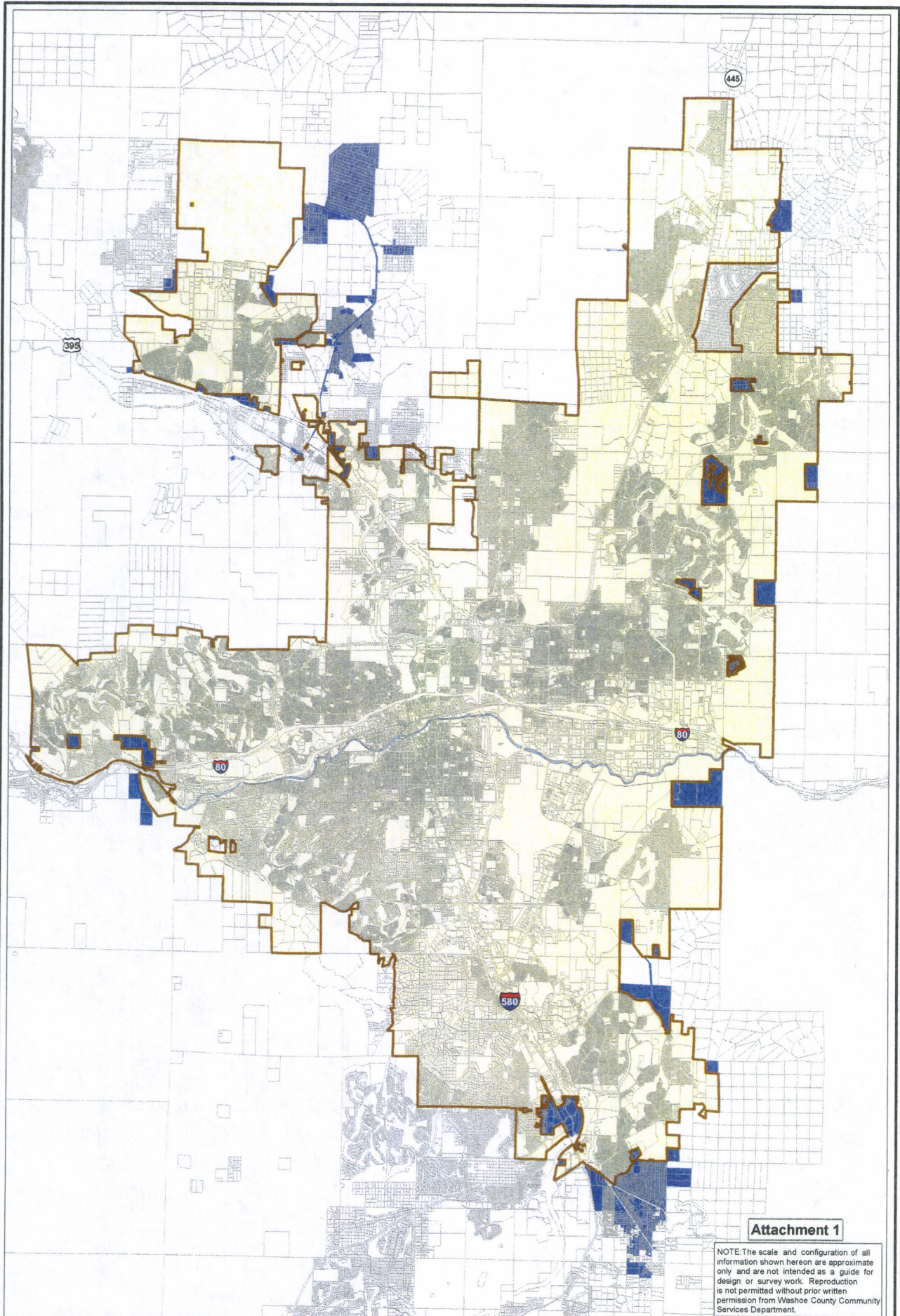
(1) Should the Board agree with the staff recommendation, possible motions would be:

"Move to consider all comments concerning a proposed amendment to the boundaries of District No. 24 (Groundwater Remediation/Central Truckee Meadows Remediation District) in Washoe County, Nevada."

(2) If, after considering all comments, the Board approves the proposed amendment, a possible motion would be:



"Move to direct that the proposed amendment to the boundaries of District No. 24 be made by ordinance."

Attachment 1: Map showing the proposed amended CTMRD 2016 fee area boundary including areas annexed into or removed from the CTMRD service area during calendar year 2015



Attachment 1

NOTE: The scale and configuration of all information shown hereon are approximate only and are not intended as a guide for design or survey work. Reproduction is not permitted without prior written permission from Washoe County Community Services Department.

-  Parcels added into the CTMRD Service Area Boundary
-  2015 Fee Year Boundary

**CENTRAL TRUCKEE MEADOWS
REMEDIATION DISTRICT
2016 FEE YEAR BOUNDARY**
(Parcels added or removed in calendar year 2015)

April 2016

