



WASHOE COUNTY

"Dedicated To Excellence in Public Service"

www.washoecounty.us

CM/ACM CS
Finance DN
DA N/A
Risk Mgt. N/A
HR N/A

STAFF REPORT

BOARD MEETING DATE: February 24, 2015

DATE: January 30, 2015
TO: Open Space and Regional Park Commission
FROM: Jennifer Budge, CPRP, Park Operations Superintendent
Community Services Department, 328.2181, jbudge@washoecounty.us
THROUGH: Eric Crump, Operations Division Director
Community Services Department, 328.2182, ecrump@washoecounty.us
SUBJECT: Accept donations totaling [\$40,750] from the Greater Reno Community Ice Skating Association [\$40,000], Richard Jay [\$250], John Roussel [\$250], and Sherry Morrey [\$250] to fund an update to the South Valleys Regional Park Master Plan; and direct the Comptroller's Office to make the appropriate budget adjustments. (Commission District 2)

SUMMARY

This item, if approved, would accept donations to Washoe County from the Greater Reno Community Ice Skating Association, a local private non-profit organization, and other citizens representing a variety of recreational user groups (baseball, soccer and ice skating) to fund an update to the South Valleys Regional Park Master Plan.

Washoe County Strategic Objective supported by this item: Sustainability of our financial, social and natural resources.

PREVIOUS ACTION

January 6, 2015, Washoe County Open Space and Regional Parks Commission recommended that the Board of County Commissioners (Board) accept donations to Washoe County from the Greater Reno Community Ice Skating Association and other user groups to fund an update to the South Valleys Regional Park Master Plan.

2000 – The Board approved an update to the South Valleys Sports Complex Master Plan to include a library funded by WC-1 Regional Parks, Trails, Open Space and Libraries Bond.

1993- The Board approved the South Valleys Sports Complex Master Plan.

BACKGROUND

South Valleys Regional Park is located in an urban portion of South Reno on Wedge Parkway, just west of Interstate 80. Park amenities include: Multi-use turf areas, playgrounds, baseball fields, a library, a park maintenance facility, group picnic shelters, parking, restrooms, concession building, and open space. (See location map attached)

The original South Valleys Regional Park (formerly South Valleys Sports Complex) Master Plan was prepared by CFA and adopted by the Board of County Commissioners in 1993 based upon public input. The Plan for approximately 82-acres had one minor update in 2000 after the voters approved the WC-1 Regional Parks, Trails, Open Space and

AGENDA ITEM # 6 m 1

Libraries Bond of 2000 to accommodate the addition of the South Valleys Library. (see attached Park Master Plan Maps)

In 2009 Dr. Dorostkar generously donated an additional 22.8-acre parcel adjacent to the park on the north end of the property. The additional acreage consists of native open space with a riparian corridor on a portion of the parcel and is currently not included in the existing Park Master Plan.

Over the past few years, several user groups have requested an update to the existing Park Master Plan to include the “Dorostkar” parcel and identify future uses, but Washoe County did not have the staff or financial resources available to accommodate this request. Earlier this year, The Greater Reno Community Ice Skating Association, a local private non-profit organization presented a proposal to County staff for consideration of adding a community ice skating/hockey facility at South Valleys Regional Park. The group has led a private effort, in cooperation with other user groups to raise the funds necessary for an update to the South Valleys Regional Park Master Plan.

This item, if approved would officially accept the donations by Washoe County. The funds would enable Washoe County to hire a third party consultant to be selected through an open, transparent process based on qualifications (Request for Qualifications) and compliant with Nevada Revised Statutes. The consultant would facilitate a robust public input process, and conduct a traffic and site analysis to prepare a plan for future consideration by the Open Space and Regional Parks Commission and the Board.

FISCAL IMPACT

Cash donations will be deposited and expensed to IN20020, Parks Donations, Fund 270. The following budget adjustments are needed:

Increase Revenue

Fund 270, IN20020-484000	\$40,750	Regional Parks Donations
--------------------------	----------	--------------------------

Increase Expenditure

Fund 270, IN20020-710100	\$40,750	Professional Services
--------------------------	----------	-----------------------

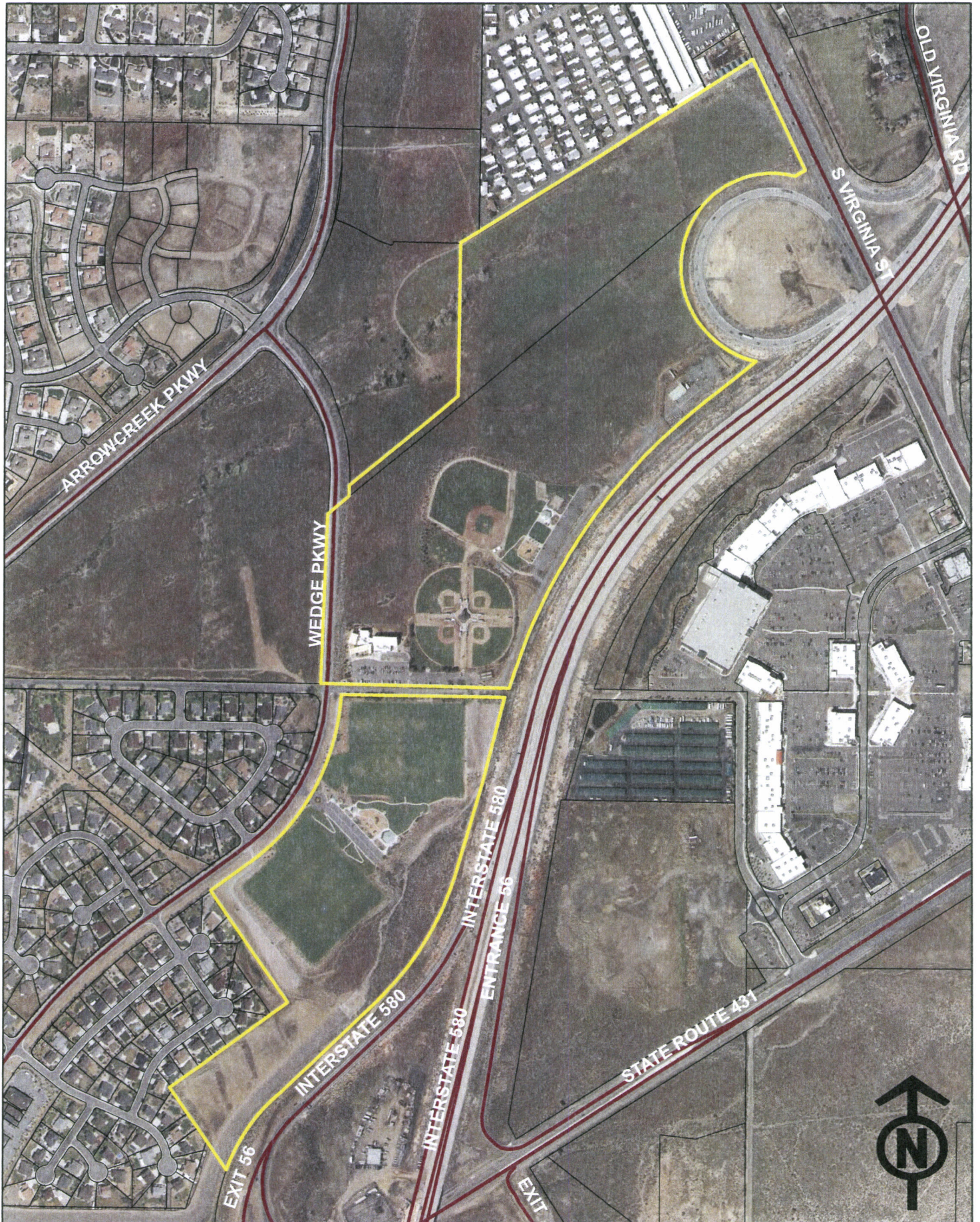
There are no above-base budget maintenance costs associated with this donation. The donation will enable Regional Parks and Open Space to update an existing master plan for the South Valley Regional Park.

RECOMMENDATION

Staff recommends that the Board of County Commissioners accept donations totaling \$40,750 from the Greater Reno Community Ice Skating Association [\$40,000], Richard Jay [\$250], John Roussel [\$250], and Sherry Morrey [\$250] to fund an update to the South Valleys Regional Park Master Plan; and direct the Comptroller’s Office to make the appropriate budget adjustments.

POSSIBLE MOTION

Should the Board agree with the staff recommendation, a possible motion would be: “Move to accept donations totaling \$40,750 from the Greater Reno Community Ice Skating Association [\$40,000], Richard Jay [\$250], John Roussel [\$250], and Sherry Morrey [\$250] to fund an update to the South Valleys Regional Park Master Plan; and direct the Comptroller’s Office to make the appropriate budget adjustments.”



SOUTH VALLEYS REGIONAL PARK



SOUTH VALLEYS REGIONAL PARK MASTER PLAN



MASTER PLAN FOR
**SOUTH VALLEYS
 REGIONAL SPORTS COMPLEX**



Vicinity Map

