

Carson City District Resource Management Plan and Environmental Impact Statement

Washoe County Presentation
January 27, 2015

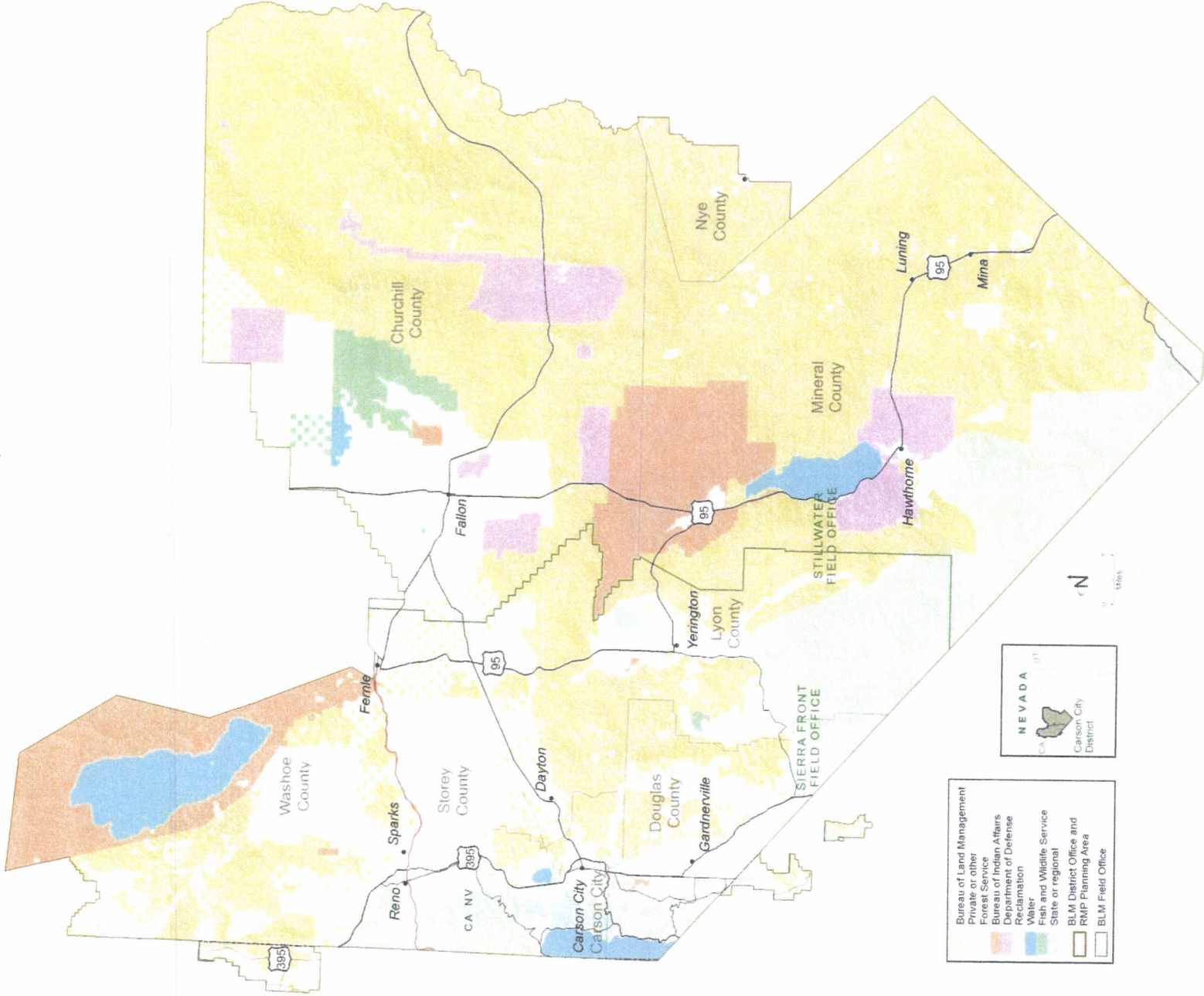
A - 01/27/2015
8



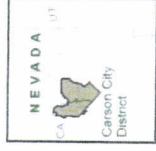


Planning Area – 8.9 million acres

Decision Area – 4.8 million acres



- Bureau of Land Management
- Private or other
- Forest Service
- Bureau of Indian Affairs
- Department of Defense
- Recreation
- Wildlife
- Fish and Wildlife Service
- State or regional
- BLM District Office and RMP Planning Area
- BLM Field Office





Washoe County –
390,500 acres of
BLM-managed land

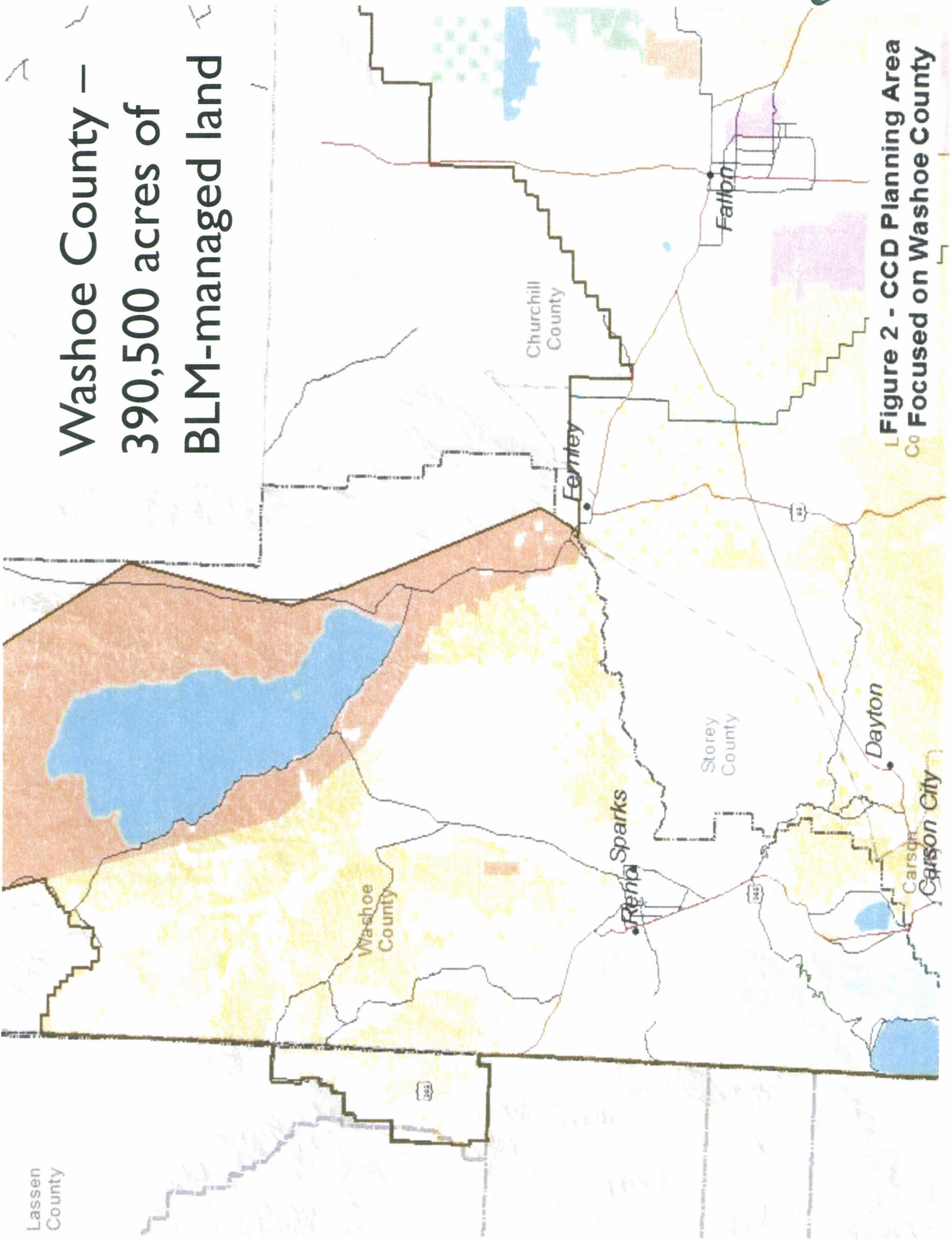


Figure 2 - CCD Planning Area
Co Focused on Washoe County

- **Scoping**
 - February 24, 2012 – April 29, 2012: 6 public meetings
 - Almost 1700 comments primarily on wild horse & burro, special designations, special status species, mineral resources and travel management
- **Cooperating Agencies**
 - 27 Memorandums of Understanding signed
 - 2 National Forests
 - 3 Federal Agencies
 - 4 Military Agencies
 - 9 Counties
 - 3 Nevada State Agencies
 - 6 Tribal Governments
- **Public Outreach**
 - More than 110 public meeting/presentations given on the RMP



Alternatives

Alternative

Description

A - No Action • Continuation of existing management under the current RMP

- B**
- Resource use-intensive
 - Provides for case-by-case mitigation
 - Fewest protected areas and restrictions to resource uses

- C**
- Conservation emphasis
 - Emphasis on special designations
 - Most protected areas and use restrictions

- D**
- Increased management of recreational opportunities
 - Enhanced community development
 - Specific management prescriptions to address public uses on the lands within the urban interface
 - Where management not specified for urban interface, current management will continue

- E – Agency Preferred**
- Variety of actions identified by public comments and cooperating agency input, and based on balancing ecosystem health and public use of the land
 - Intermediate level of protection, restoration, enhancements, and use of resources
 - Provides an array of proactive and prescriptive protection measures



Sage Grouse

- Greater and Bi-State Sage-Grouse
 - **275,600** acres of PPMA
 - **138,600** acres of PGMA
 - **153,400** acres of Bi-State Priority Habitat
 - **47,600** acres of Bi-State Connectivity Habitat

Range of alternatives is consistent with the NV/CA Greater Sage-Grouse Draft LUPA and the Bi-State Sage-Grouse Draft LUPA



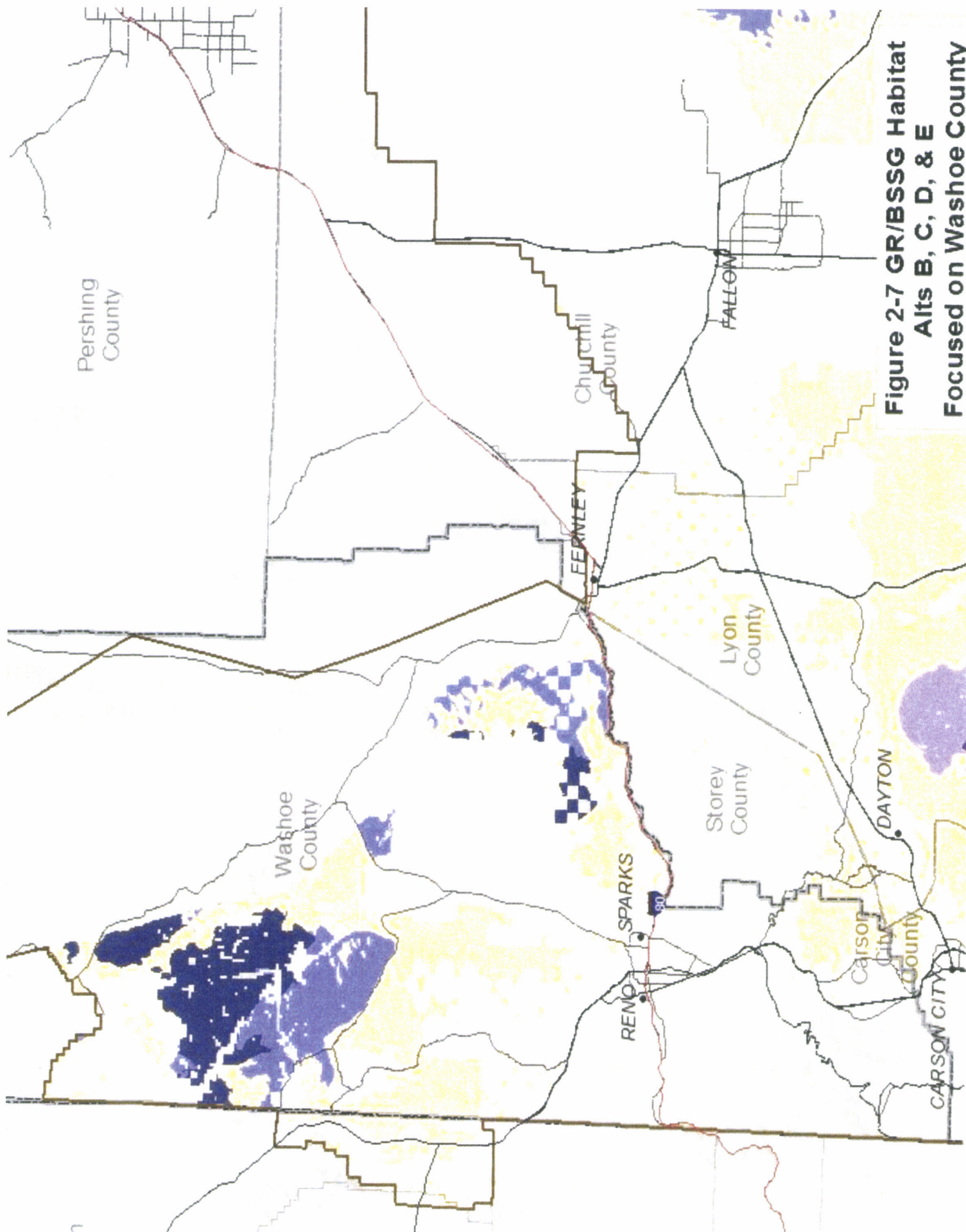


Figure 2-7 GR/BSSG Habitat Alts B, C, D, & E Focused on Washoe County

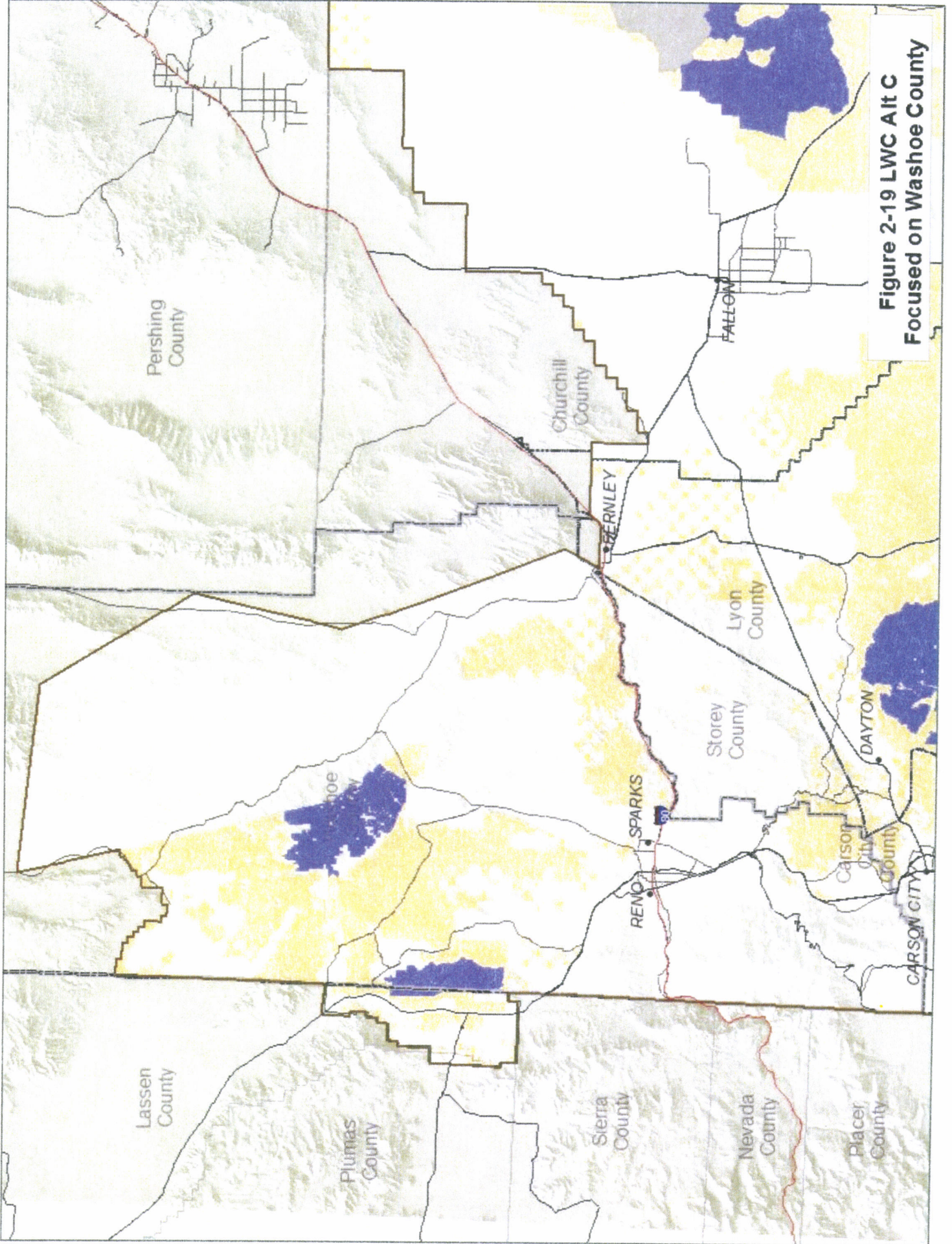
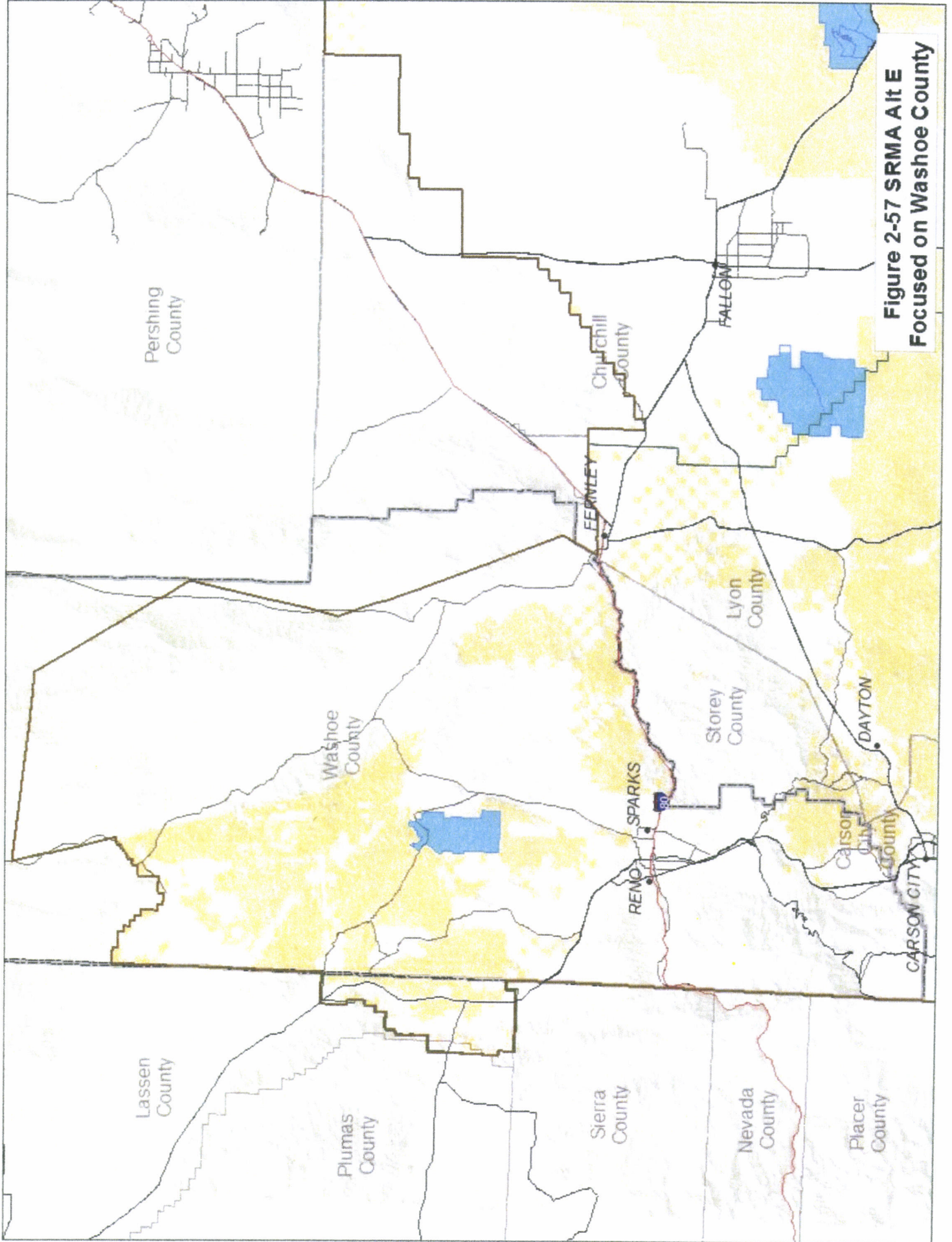


Figure 2-19 LWC Alt C
Focused on Washoe County

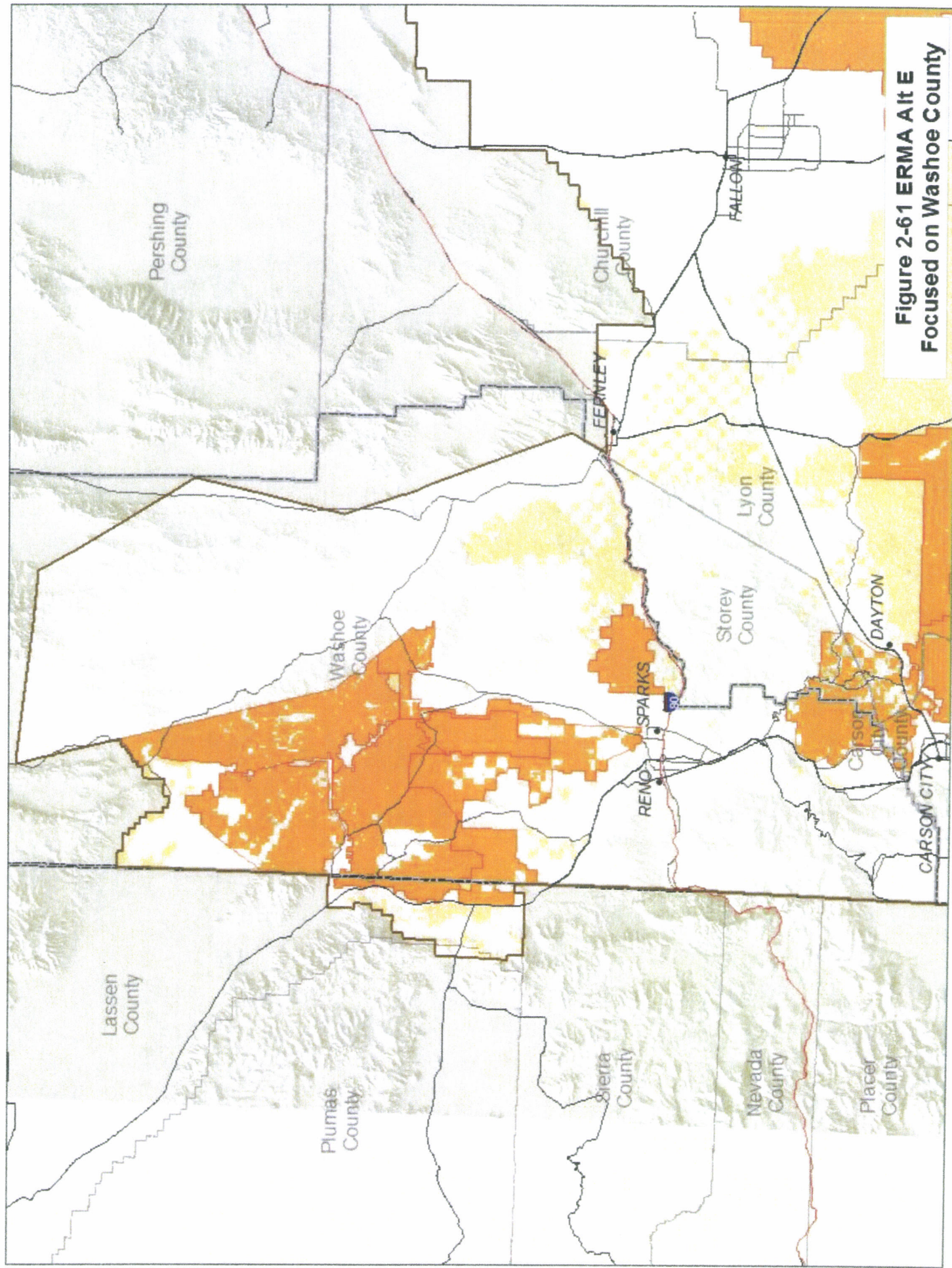


Recreation and Travel Management

	Alternative A	Alternative B	Alternative C	Alternative D	Alternative E (Preferred)
Recreation Management Areas					
SRMAs	2 67,700 (1%)	6 76,100 (2%)	3 74,700 (2%)	4 67,100 (1%)	6 106,100 (2%)
ERMAs	-----	8 1,678,320 (35%)	15 1,528,760 (32%)	6 292,620 (6%)	15 2,085,730 (43%)
Lands not designated RMA	-----	3,050,080 (64%)	3,201,040 (67%)	4,444,780 (93%)	2,612,670 (54%)



**Figure 2-57 SRMA A1t E
Focused on Washoe County**



**Figure 2-61 ERMA Ait E
Focused on Washoe County**



Recreation and Travel Management

	Alternative A	Alternative B	Alternative C	Alternative D	Alternative E (Preferred)
Travel Management Areas					
Open	3,840,300 (80%)	95,300 (2%)	1,300 (0%)	22,700 (.5%)	55,700 (1%)
Closed to motorized and mechanized	6,900 (.1%)	4,300 (0%)	598,000 (12%)	1,600 (0%)	6,200 (.1%)
Closed to motorized (mechanized limited to existing)	31,800 (.6%)	26,700 (.5%)	1,190,500 (25%)	30,600 (.6%)	24,100 (.5%)
Limited	924,300 (19%)	4,677,00 (97%)	3,013,500 (63%)	4,748,400 (99%)	4,717,300 (98%)



Proposed Lands and Realty

	Alternative A	Alternative B	Alternative C	Alternative D	Alternative E (Preferred)
Identified for Disposal	179,700 (.4%)	273,300 (6%)	-----	332,500 (7%)	267,200 (6%)
ROW Exclusion	564,100 (12%)	580,000 (12%)	2,675,800 (56%)	564,100 (12%)	605,900 (13%)
ROW Avoidance	-----	1,195,800 (25%)	369,300 (8%)	1,226,100 (26%)	1,448,200 (30%)
Wind Exclusion	-----	-----	2,073,200 (43%)	-----	629,900 (13%)
Wind Avoidance	-----	1,220,200 (25%)	-----	1,228,100 (26%)	956,900 (20%)
Solar Variance	905,900 (19%)	773,400 (16%)	578,400 (12%)	672,100 (14%)	629,900 (13%)

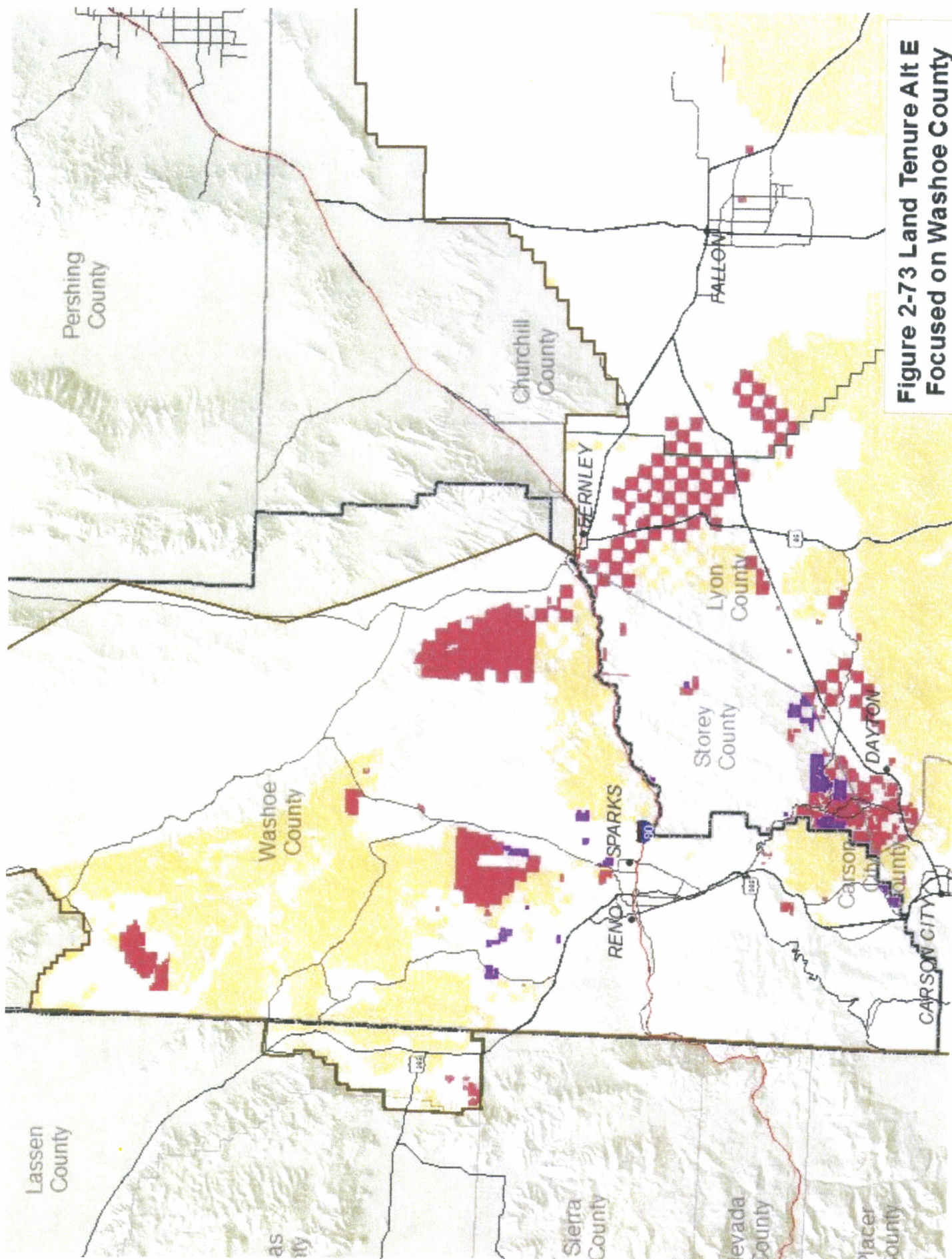


Figure 2-73 Land Tenure Alt E Focused on Washoe County



Areas of Critical Environmental Concern

	Alternative A	Alternative B	Alternative C	Alternative D	Alternative E (Preferred)
# of ACECs	6	13	23	11	8
Acres	21,800 (.5%)	371,170 (7.7%)	786,270 (16.4%)	180,000 (3.8%)	82,770 (1.7%)

Planning Process Steps – Estimated Timeline and Schedule

